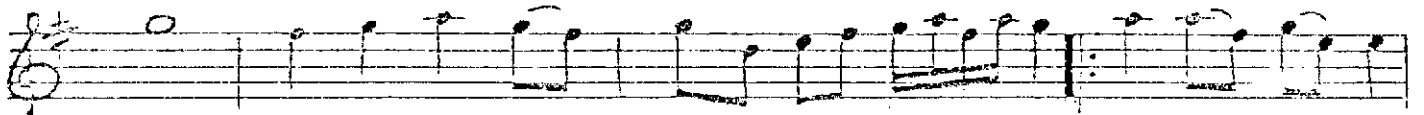
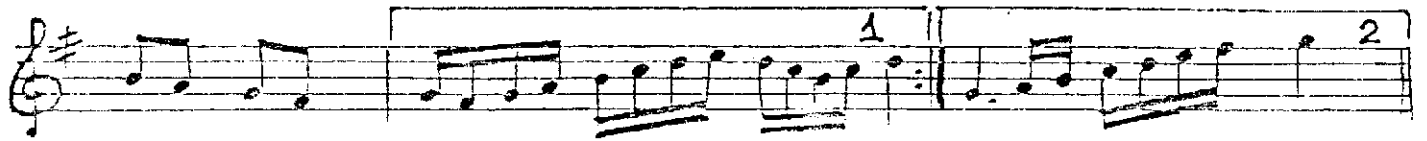
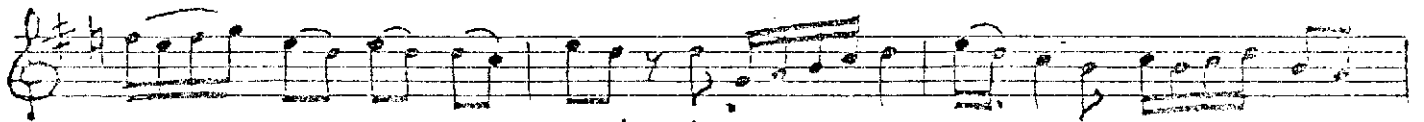


MÂHÛR TÜRKÜ
SOFYAN

ŞU DERE YONCA
(ALİM)



K AH EŞU DE RE YON CA (Saz -) KAÇ KOL LA RIN
AH Â ŞIK O LA NIN KA LIR MI AK
AH ME ŞE Lİ DAĞ LAR A ÇIL DI GÜL
AH Çİ LE Lİ BÜL BÜL HER SE HER FER



SAR BOY NU MA A LİM (Saz -) A LİM
LI BA ŞIN DA A LİM A LİM
LÂ LE SÜN BÜL A LİM A LİM
YÂD E DE RE K A LİM A LİM



(B) BOY LU BO YUN CA (Saz -) CA (Saz -) (D)
YÂ Rİ GÖ RÜN CE CE
BE ZENDİ DAĞ LAR LAR
AH ÇE KER AĞ LAR LAR